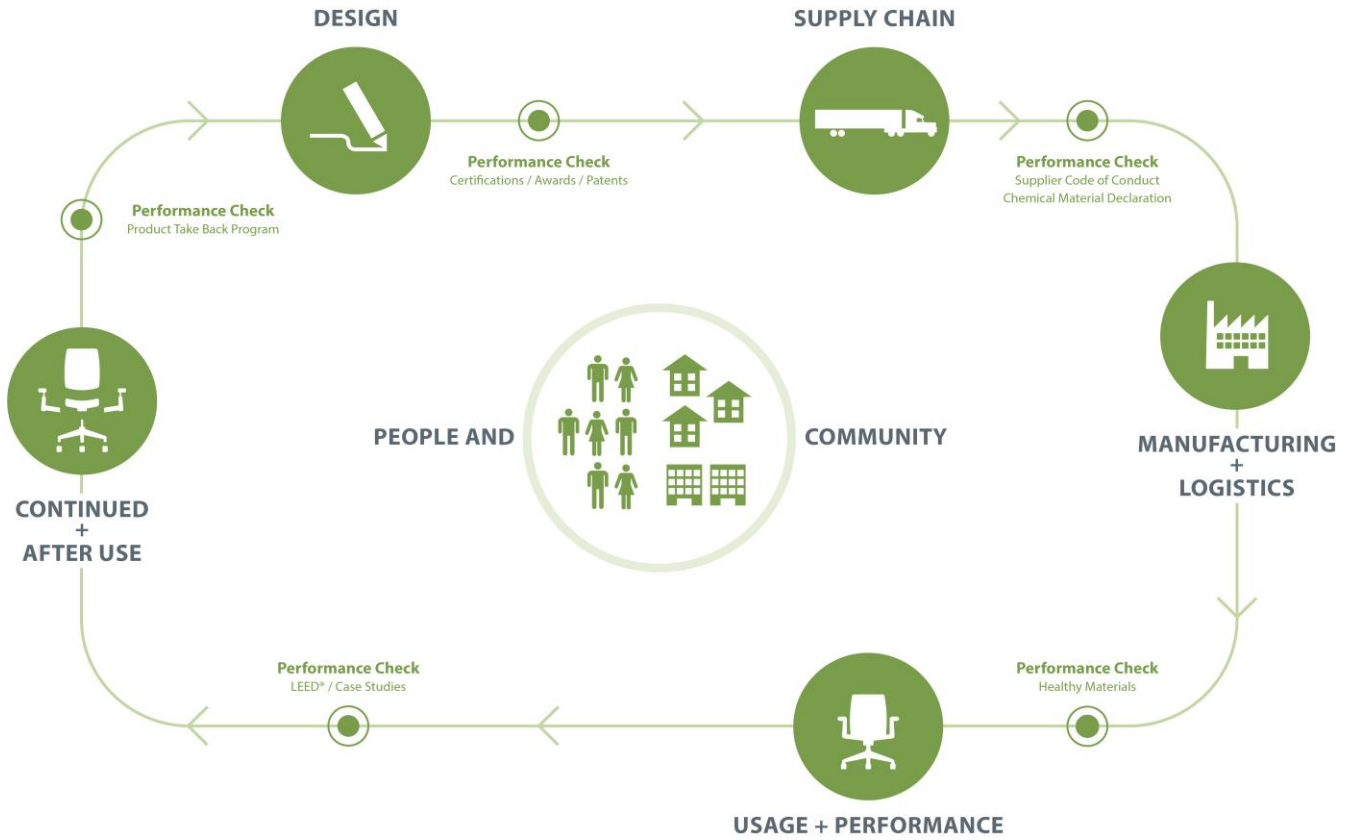




Poppy Lounge™

Category: Seating

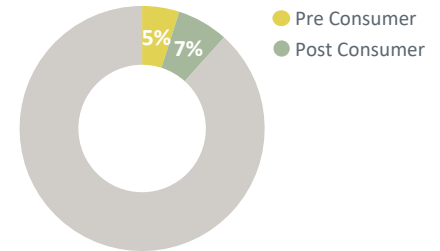


Poppy seating helps furnish comfortable, flexible spaces that foster the creative performance crucial for innovation. The Poppy lounge chair provides an inviting destination where people can interact with others, work on their own, or simply relax.

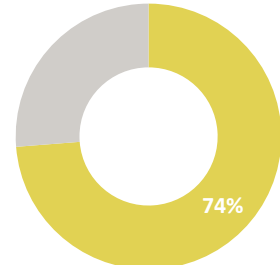
Poppy Lounge is manufactured in a zero landfill, ISO 9001 and ISO14001 certified facility in Conover, North Carolina and is transported in freight vehicles with optimized volume for efficient use of loading space. When a product reaches the end of its useful life, customers and partners are encouraged to avoid landfilling and instead pursue second life options.

Material	Material Weight
Wood	14.60 lbs (34%)
Steel	14.51 lbs (34%)
Foam	10.90 lbs (26%)
Fabric	1.69 lbs (4%)
Plastic	0.56 lbs (1%)
Other	0.26 lbs (1%)
Total	42.52 lbs (100%)

Recycled Content



Recyclability

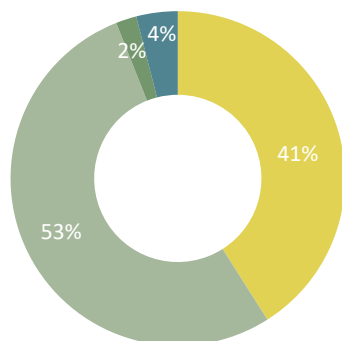


Life Cycle Assessment (LCA)

Carbon Footprint	120 kg CO ² eq.
Acidification	0.44 kg SO ₂ eq.
Eutrophication	0.130 kg N eq.
Smog	6.2 kg O ₃ eq.
Ozone Depletion	1.30E-06 kg CFC11 eq.

Impact by Life Cycle Stage

- Procurement
- Manufacturing
- Distribution
- End of Life



Material Chemistry

Haworth is committed to providing our customers with products that support safe and healthy environments. We are working diligently toward the ongoing reduction of hazardous chemicals associated with parts and materials we source, as new safer alternatives become commercially available.

These include, among others, PVC, benzidine dyes, hexavalent chromium, certain hazardous phthalates, PBDE flame retardants, and those chemicals known to contribute towards ozone depletion.

We are committed to achieving our goal of being transparent with our customers on our progress.

Certifications



Greenguard Certified

Certification # 105417-420

Refer to spot.ul.com for certificate



BIFMA level 2 certified

Refer to NSF.org for certificate



mindful MATERIALS

This product can be found in Haworth's mM library



Building Standards

In support of building standards such as Leadership in Energy and Environmental Design, LEED® v4 and WELL Building Standard®v2:

Low Emitting Materials:

- Most Haworth products comply with ANSI/BIFMA e3-2014e Credit 7.6.1 and 7.6.2 demonstrated via GREENGUARD certificates found on spot.ul.com

Responsible Sourcing of Raw Materials:

- Most Haworth wood products are available as FSC® Mix 70%.
- Most Haworth products are composed of high recycled content.

Environmental Product Declarations (EPDs):

- Product-specific Type III EPDs are available for select high-volume products.