

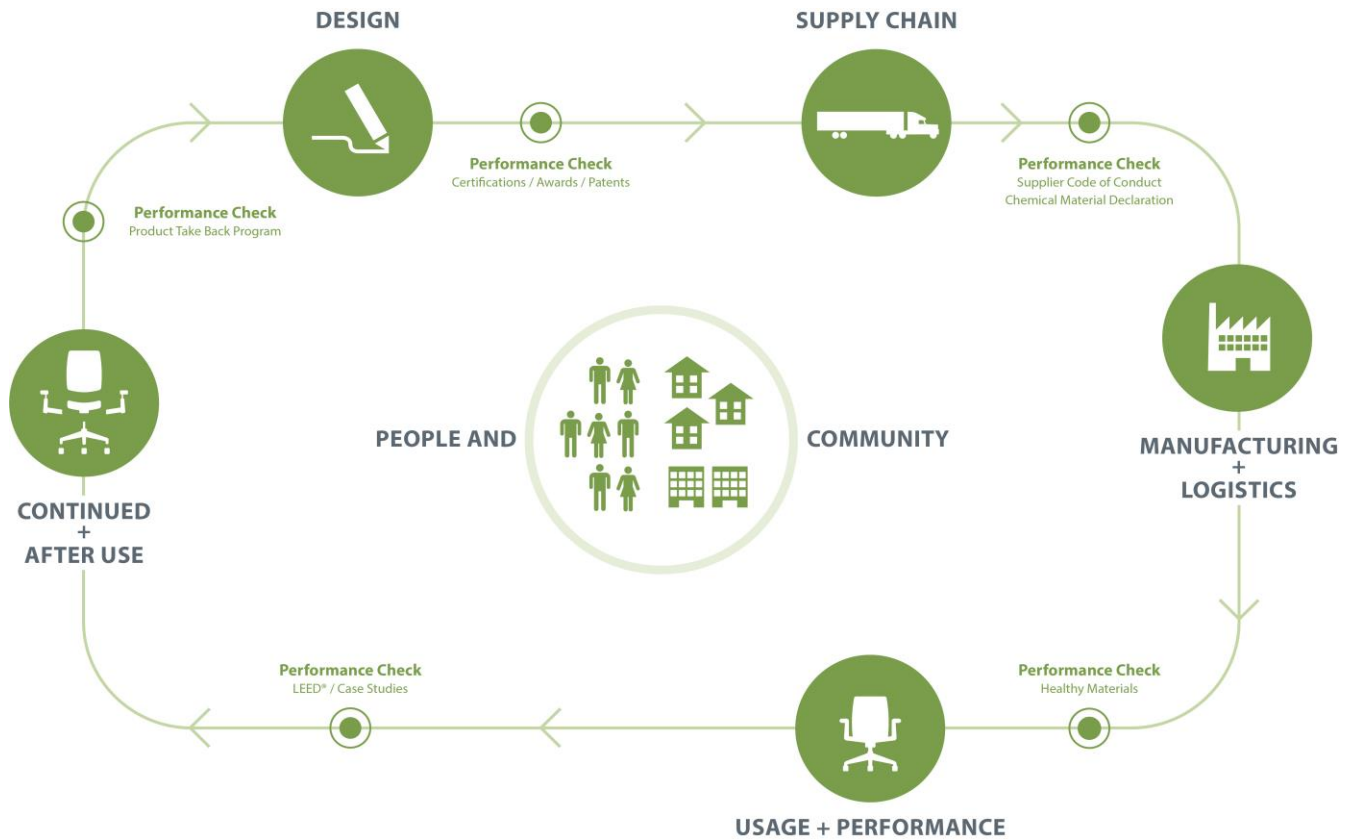
# Product Environmental Data Sheet

Sector: North America



# Intuity®

Category: Systems

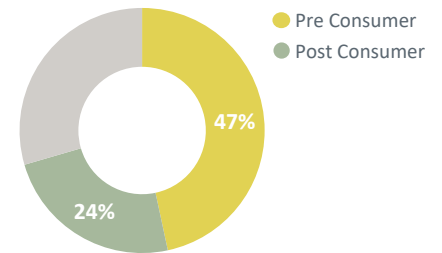


Easy to specify and install, Intuity benching consists of a modular kit of parts, providing options to help optimize space and efficiently adapt to changes. Intuity makes it easy to design an engaging, collaborative environment that supports a variety of workstyles.

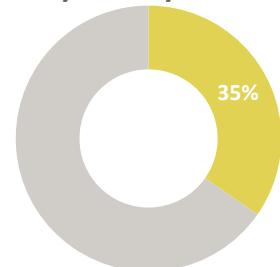
Intuity is manufactured in a zero landfill, ISO 9001 and ISO 14001 certified facility in Holland, Michigan and is transported in freight vehicles with optimized volume for efficient use of loading space. When a product reaches the end of its useful life, customers and partners are encouraged to avoid landfilling and instead pursue second life options.

Material	Material Weight	
Particleboard	306.77 lbs	(61%)
Steel	122.48 lbs	(24%)
Aluminum	37.84 lbs	(7%)
Plastic	15.22 lbs	(3%)
Plywood	15.05 lbs	(3%)
Other	8.28 lbs	(2%)
<b>Total</b>	<b>505.64 lbs</b>	<b>(100%)</b>

## Recycled Content



## Recyclability



## Life Cycle Assessment (LCA)

Haworth is committed to better understanding and reducing the environmental impacts of our products and operations.

Life Cycle Assessments (LCAs) are tools which allow us to evaluate potential environmental impacts of our products from cradle-to-grave including raw material extraction, pre-processing, production, product distribution, use and maintenance, and end-of-life management.

Results of LCA studies provide value in the identification of cost savings, improvement of design and material evaluation, advancement of procurement and transportation decision making, new product development criteria, as well as ultimately reducing Haworth's impact on the environment through continuous improvement efforts.

## Material Chemistry

Haworth is committed to providing our customers with products that support safe and healthy environments. We are working diligently toward the ongoing reduction of hazardous chemicals associated with parts and materials we source, as new safer alternatives become commercially available.

These include, among others, PVC, benzidine dyes, hexavalent chromium, certain hazardous phthalates, PBDE flame retardants, and those chemicals known to contribute towards ozone depletion.

We are committed to achieving our goal of being transparent with our customers on our progress.

Haworth Banned Chemical List Compliant

Healthier Hospitals Healthy Interiors Compliant

\*Product configuration dependent. Contact Sustainability@Haworth.com

## Certifications



### Greenguard Certified

Certification # 58588-420

Refer to [spot.ul.com](http://spot.ul.com) for certificate



### FSC® certified wood is available

as a standard product offering

Chain of Custody Code: SCS-COC-001218



### BIFMA level 3 certified

Refer to NSF.org for certificate



### mindful MATERIALS

This product can be found in Haworth's mM library

## Building Standards

In support of building standards such as Leadership in Energy and Environmental Design, LEED® v4 and WELL Building Standard®v2:

Low Emitting Materials:

- Most Haworth products comply with ANSI/BIFMA e3-2014e Credit 7.6.1 and 7.6.2 demonstrated via GREENGUARD certificates found on [spot.ul.com](http://spot.ul.com)

Responsible Sourcing of Raw Materials:

- Most Haworth wood products are available as FSC® Mix 70%.
- Most Haworth products are composed of high recycled content.

Environmental Product Declarations (EPDs):

- Product-specific Type III EPDs are available for select high-volume products.