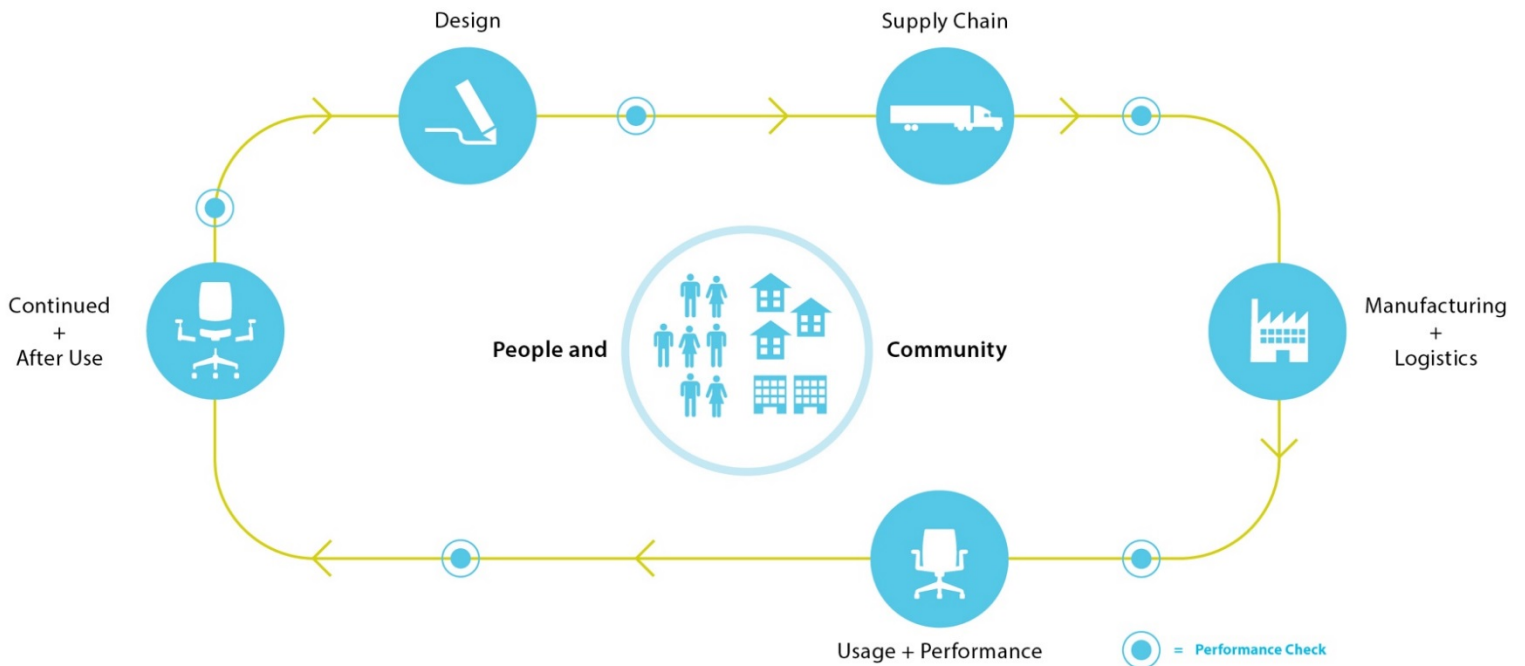


Pip™ Table

PRODUCT CATEGORY: TABLES

PRODUCT ENVIRONMENTAL DATA SHEET

SECTOR: NORTH AMERICA



HAWORTH®

With its versatile form and variety of options, Pip brings a mix of personality and functionality to your space. A choice of planked wood or painted MDF surface lets you dress Pip up or down depending on your aesthetic, while an array of color selections is available to complement any environment.

Material	Material Weight	Recycled Content	Recyclability
Steel	8.68 lbs (54%)	<p>42% 12%</p> <p>■ Pre-Consumer ■ Post Consumer</p>	<p>69%</p>
MDF	4.71 lbs (29%)		
Aluminum	2.49 lbs (15%)		
Powder Coat	0.21 lbs (1%)		
Felt	0.04 lbs (0%)		
Other	0.02 lbs (0%)		
Total	16.15 lbs (100%)		



LIFE CYCLE ASSESSMENT (LCA)*

Life Cycle Assessments (LCAs) are one tool which allows us to enhance the triple bottom line of Haworth products by identifying high environmental impact stages within our products' lifecycles. Haworth is committed to better understanding and reducing the impacts of our products and operations on the natural world.

At Haworth, we are committed to looking beyond carbon footprint by taking a detailed inventory of our product's impacts through LCA, including human and ecosystem toxicity, land use and water quality. Results of the LCA studies provide value in the identification of cost savings, improvement of design and material evaluation, advancement of procurement and transportation decision making, new product development criteria, as well as ultimately reducing Haworth's impact on the environment through continuous improvement efforts.



MATERIAL CHEMISTRY

We believe that our products should be safe for humans and the environment. That's why we are working diligently to identify and eliminate chemicals of concern in the materials we source. While we have identified more than 870 chemicals that we plan to eliminate from our products throughout the next 10 years, we have identified 56 chemicals that we plan to eliminate by 2018.

These include, among others, PVC, benzidine dyes, ozone depletors, hexavalent chromium, certain hazardous phthalates, and PBDE flame retardants. We are committed to achieving this goal and being transparent with our customers about our progress



CERTIFICATIONS

WELL BUILDING STANDARD®

With the advent of the first wellness-based building standard, pioneered by DELOS, Haworth was eager to implement the WELL Building Standard both in our products and showrooms globally. Haworth has the first WELL Certified project in Asia - our Shanghai showroom, as well as the first WELL certified office furniture showroom in the US - our LA showroom.

- Adaptable and flexible - our Integrated Palette™ ensures products are designed with flexibility and adaptability in mind
- Low emitting materials - major products are Greenguard certified
- Non-toxic materials - major products are free of chemicals of concern including urea-formaldehyde (green core option)
- Material transparency - chemical (HPD) and life-cycle (EPD) assessments are in the development process