

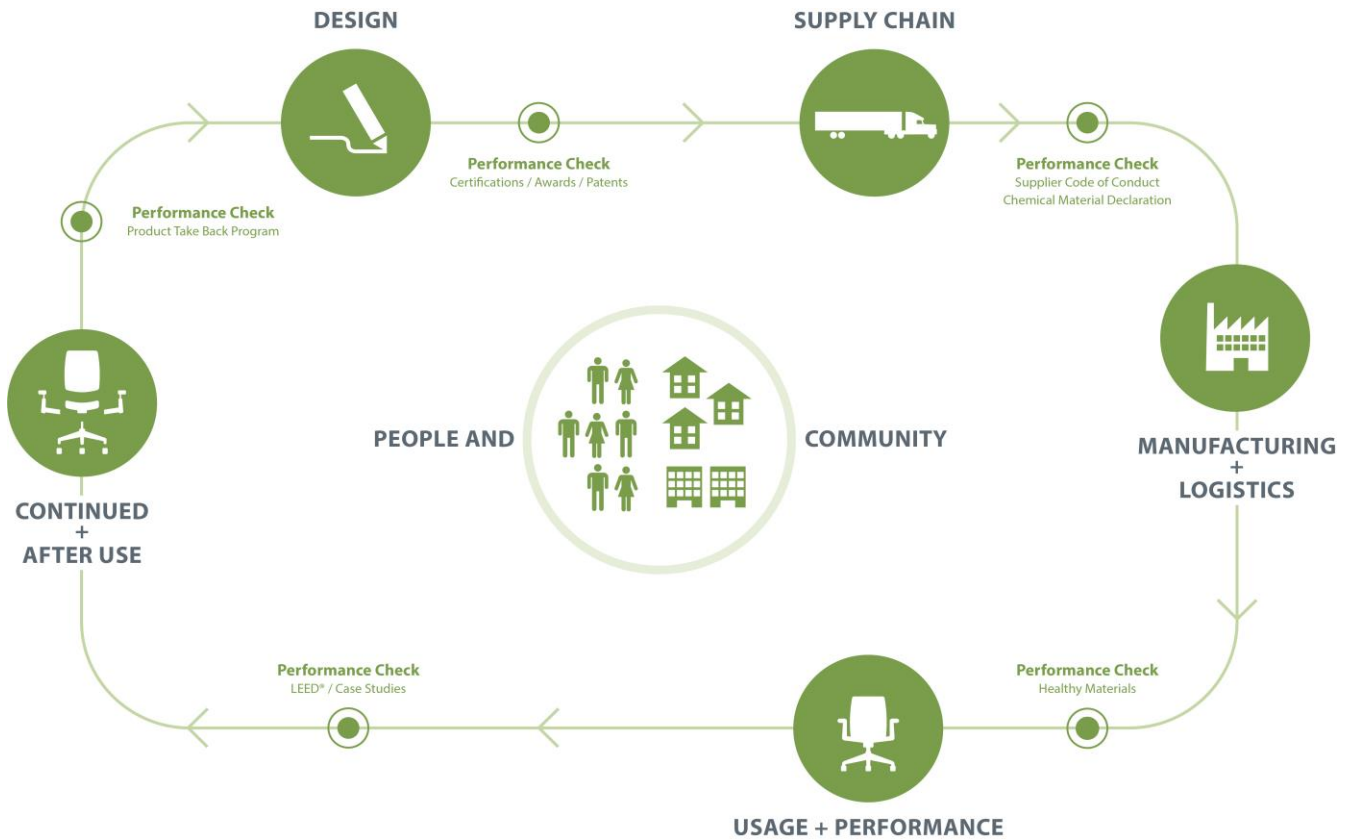
# Product Environmental Data Sheet

Sector: North America



# Zody Task®

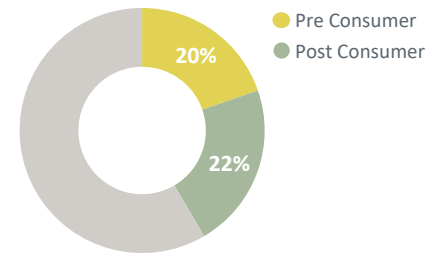
Category: Seating



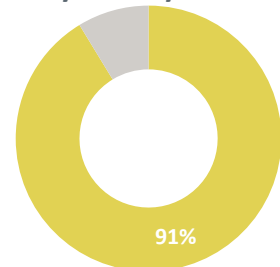
Designed with European influences, the Zody desk chair blends science-based wellness and comfort with sustainability. Zody fits beautifully everywhere in the office, from workstations to boardrooms.

Zody is manufactured in a zero landfill, ISO 9001 and ISO 14001 certified facility in Bruce, Mississippi and is transported in freight vehicles with optimized volume for efficient use of loading space. When a product reaches the end of its useful life, customers and partners are encouraged to avoid landfilling and instead pursue second life options.

## Recycled Content



## Recyclability

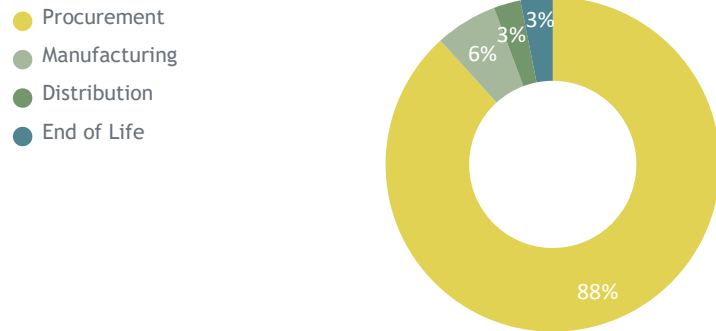


Material	Material Weight
Steel	18.53 lbs (41%)
Plastic	13.00 lbs (29%)
Aluminum	9.91 lbs (22%)
Foam	3.24 lbs (7%)
Other	0.71 lbs (2%)
<b>Total</b>	<b>45.39 lbs (100%)</b>

## Life Cycle Assessment (LCA)

Carbon Footprint	130 kg CO <sup>2</sup> eq.
Acidification	0.55 kg SO <sub>2</sub> eq.
Eutrophication	0.064 kg N eq.
Smog	7.3 kg O <sub>3</sub> eq.
Ozone Depletion	1.20E-06 kg CFC11 eq.

### Impact by Life Cycle Stage



## Material Chemistry

Haworth is committed to providing our customers with products that support safe and healthy environments. We are working diligently toward the ongoing reduction of hazardous chemicals associated with parts and materials we source, as new safer alternatives become commercially available.

These include, among others, PVC, benzidine dyes, hexavalent chromium, certain hazardous phthalates, PBDE flame retardants, and those chemicals known to contribute towards ozone depletion.

We are committed to achieving our goal of being transparent with our customers on our progress.

Haworth Banned Chemical List Compliant

Healthier Hospitals Healthy Interiors Compliant

## Certifications



### Greenguard Certified

Certification # 2038-420

Refer to [spot.ul.com](http://spot.ul.com) for certificate



### BIFMA level 3 certified

Refer to [NSF.org](http://NSF.org) for certificate



### mindful MATERIALS

This product can be found in Haworth's mM library

## Building Standards

In support of building standards such as Leadership in Energy and Environmental Design, LEED® v4 and WELL Building Standard®v2:

### Low Emitting Materials:

- Most Haworth products comply with ANSI/BIFMA e3-2014e Credit 7.6.1 and 7.6.2 demonstrated via GREENGUARD certificates found on [spot.ul.com](http://spot.ul.com)

### Responsible Sourcing of Raw Materials:

- Most Haworth wood products are available as FSC® Mix 70%.
- Most Haworth products are composed of high recycled content.

### Environmental Product Declarations (EPDs):

- Product-specific Type III EPDs are available for select high-volume products.