

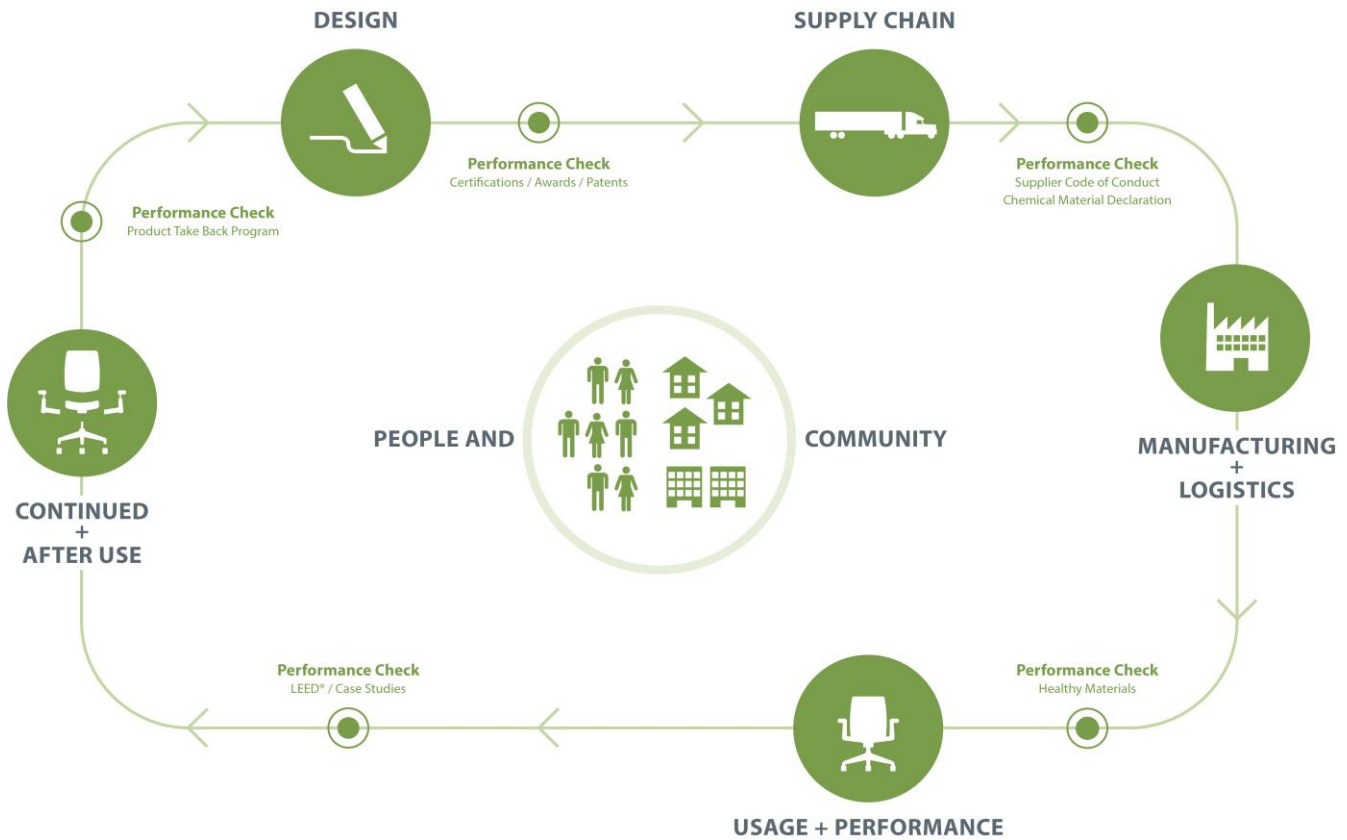
# Product Environmental Data Sheet

Sector: North America



# Immerse™

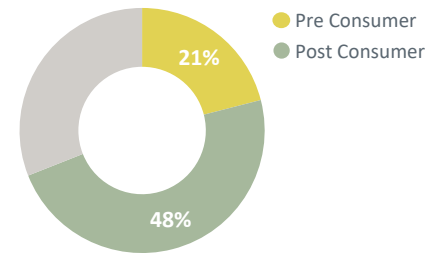
Category: Tables



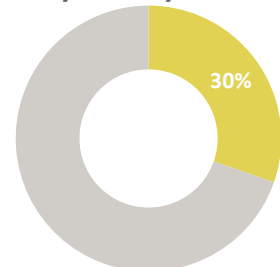
Immerse tables create a landscape of varied surfaces, providing a welcoming community hub that transforms collaborative experiences, warms up the work environment, and promotes well-being. They help people connect, collaborate, and engage.

Immerse™ is manufactured in Chatfield, MN, USA. When a product reaches the end of its useful life, customers and partners are encouraged to avoid landfilling and instead pursue second life options – through remanufacturing or charitable donations, or recycling of materials.

### Recycled Content



### Recyclability



Material	Material Weight
Particleboard	107.68 lbs (61%)
Wood	24.78 lbs (14%)
Steel	19.13 lbs (11%)
Laminate	13.46 lbs (8%)
Aluminum	9.28 lbs (5%)
Other	0.83 lbs (0%)
<b>Total</b>	<b>175.16 lbs (100%)</b>

## Life Cycle Assessment (LCA)

Haworth is committed to better understanding and reducing the environmental impacts of our products and operations.

Life Cycle Assessments (LCAs) are tools which allow us to evaluate potential environmental impacts of our products from cradle-to-grave including raw material extraction, pre-processing, production, product distribution, use and maintenance, and end-of-life management.

Results of LCA studies provide value in the identification of cost savings, improvement of design and material evaluation, advancement of procurement and transportation decision making, new product development criteria, as well as ultimately reducing Haworth's impact on the environment through continuous improvement efforts.

## Material Chemistry

Haworth is committed to providing our customers with products that support safe and healthy environments. We are working diligently toward the ongoing reduction of hazardous chemicals associated with parts and materials we source, as new safer alternatives become commercially available.

These include, among others, PVC, benzidine dyes, hexavalent chromium, certain hazardous phthalates, PBDE flame retardants, and those chemicals known to contribute towards ozone depletion.

We are committed to achieving our goal of being transparent with our customers on our progress.

Haworth Banned Chemical List Compliant

\*Product configuration dependent. Contact Sustainability@Haworth.com

## Certifications



### Greenguard Certified

Certification # 99810-410

Refer to [spot.ul.com](http://spot.ul.com) for certificate



### mindful MATERIALS

This product can be found in Haworth's mM library

## Building Standards

In support of building standards such as Leadership in Energy and Environmental Design, LEED® v4 and WELL Building Standard®v2:

Low Emitting Materials:

- Most Haworth products comply with ANSI/BIFMA e3-2014e Credit 7.6.1 and 7.6.2 demonstrated via GREENGUARD certificates found on [spot.ul.com](http://spot.ul.com)

Responsible Sourcing of Raw Materials:

- Most Haworth wood products are available as FSC® Mix 70%.
- Most Haworth products are composed of high recycled content.

Environmental Product Declarations (EPDs):

- Product-specific Type III EPDs are available for select high-volume products.