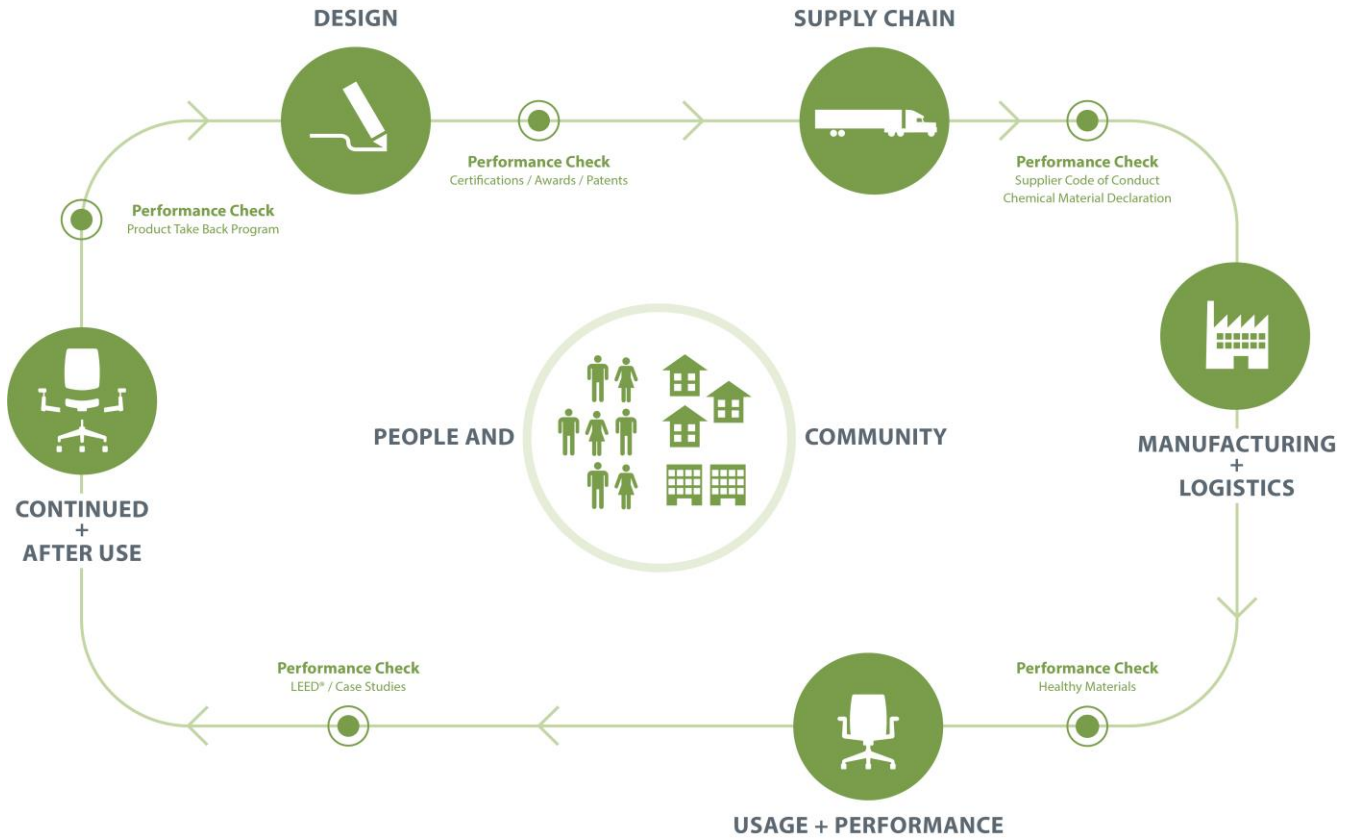




Cabana Lounge™

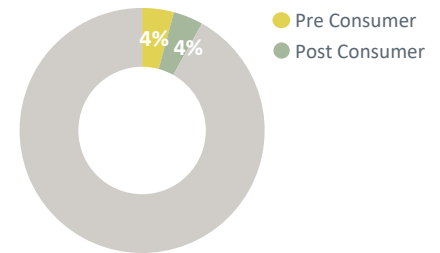
Category: Seating



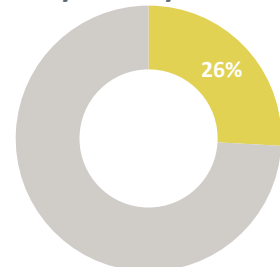
Cabana Lounge is the first sofa system designed to deliver optimal user performance, comfort, and design to create unique destination spaces in the office environment. Its flexible design and array of configurations suit a variety of needs, enabling effective individual and collaborative work.

Cabana Lounge is manufactured in a zero landfill, ISO 9001 and ISO14001 certified facility in Conover, North Carolina and is transported in freight vehicles with optimized volume for efficient use of loading space. When a product reaches the end of its useful life, customers and partners are encouraged to avoid landfilling and instead pursue second life options.

Recycled Content



Recyclability

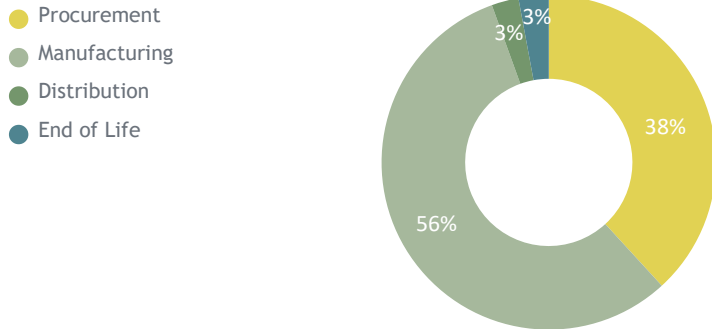


Material	Material Weight
Plywood	112.63 lbs (60%)
Foam	21.10 lbs (11%)
Fabric	15.31 lbs (8%)
Steel	12.00 lbs (6%)
Aluminum	8.40 lbs (4%)
Wood	7.20 lbs (4%)
Cardboard	5.52 lbs (3%)
Fiberboard	4.76 lbs (3%)
Adhesive	1.00 lbs (1%)
Plastic	0.29 lbs (0%)

Life Cycle Assessment (LCA)

Carbon Footprint	430 kg CO ² eq.
Acidification	1.40 kg SO ₂ eq.
Eutrophication	0.320 kg N eq.
Smog	22.0 kg O ₃ eq.
Ozone Depletion	2.30E-06 kg CFC11 eq.

Impact by Life Cycle Stage



Material Chemistry

Haworth is committed to providing our customers with products that support safe and healthy environments. We are working diligently toward the ongoing reduction of hazardous chemicals associated with parts and materials we source, as new safer alternatives become commercially available.

These include, among others, PVC, benzidine dyes, hexavalent chromium, certain hazardous phthalates, PBDE flame retardants, and those chemicals known to contribute towards ozone depletion.

We are committed to achieving our goal of being transparent with our customers on our progress.

Haworth Banned Chemical List Compliant

Certifications



Greenguard Certification Pending
 Certification # Pending
 Refer to spot.ul.com for certificate



BIFMA level Score Pending
 Refer to NSF.org for certificate

Building Standards

In support of building standards such as Leadership in Energy and Environmental Design, LEED® v4 and WELL Building Standard®v2:

Low Emitting Materials:

- Most Haworth products comply with ANSI/BIFMA e3-2014e Credit 7.6.1 and 7.6.2 demonstrated via GREENGUARD certificates found on spot.ul.com

Responsible Sourcing of Raw Materials:

- Most Haworth wood products are available as FSC® Mix 70%.
- Most Haworth products are composed of high recycled content.

Environmental Product Declarations (EPDs):

- Product-specific Type III EPDs are available for select high-volume products.