

Grid

Pablo Designs | Pablo Studio | 2018 | Imported from China

FEATURES AND SPECIFICATIONS

Voltage:	120V to 277V 50/60Hz
Power consumption:	20 watts (pendant light, 18.5") 60 watts (pendant light, 46.3")
Color temperature:	2700K
Luminosity:	1200 lumens (pendant light, 18.5") 3600 lumens (pendant light, 46.3")
Luminaire efficacy:	91 lumens/watt
Color rendition index:	83 CRI
Rated lifespan:	50,000 hours
Bulb type:	LED flat panel
Cord length:	10 feet (field cuttable)

Pendant Lights

Grid lights are comprised of transparent acrylic or wood slats, suspended by a fabric cord and four steel cables. Features full range dim control and glare free illumination. The square canopy is made of steel.

ADDITIONAL NOTES

All Grid lighting is UL and CE certified.



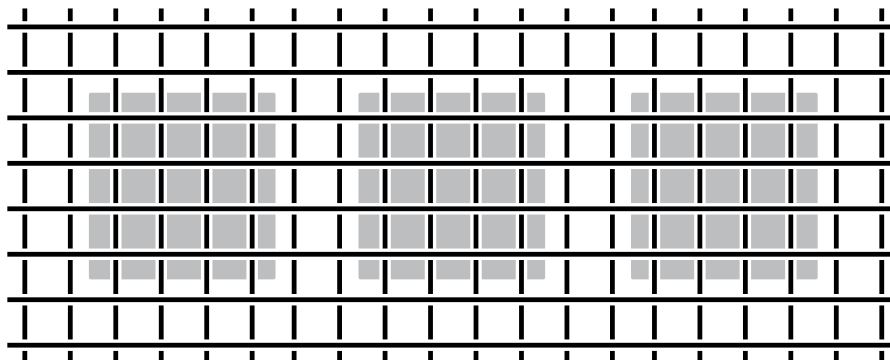
SURFACES

Acrylic Trim

Bronze (KH-1)
Frosted (KH-2)

Wood Trim

Ash (RX-1)



Grid

Pablo Designs | Pablo Studio | 2018 | Imported from China

To order, specify:

1. Product number
2. Acrylic or wood trim color



Pendant Light, 18.5"	Number	List Price
Acrylic	HCPL-GRP1-18A	580.00
Wood	HCPL-GRP1-18W	650.00



Pendant Light, 46.3"	Number	List Price
Acrylic	HCPL-GRP2-46A	1,200.00
Wood	HCPL-GRP2-46W	1,340.00