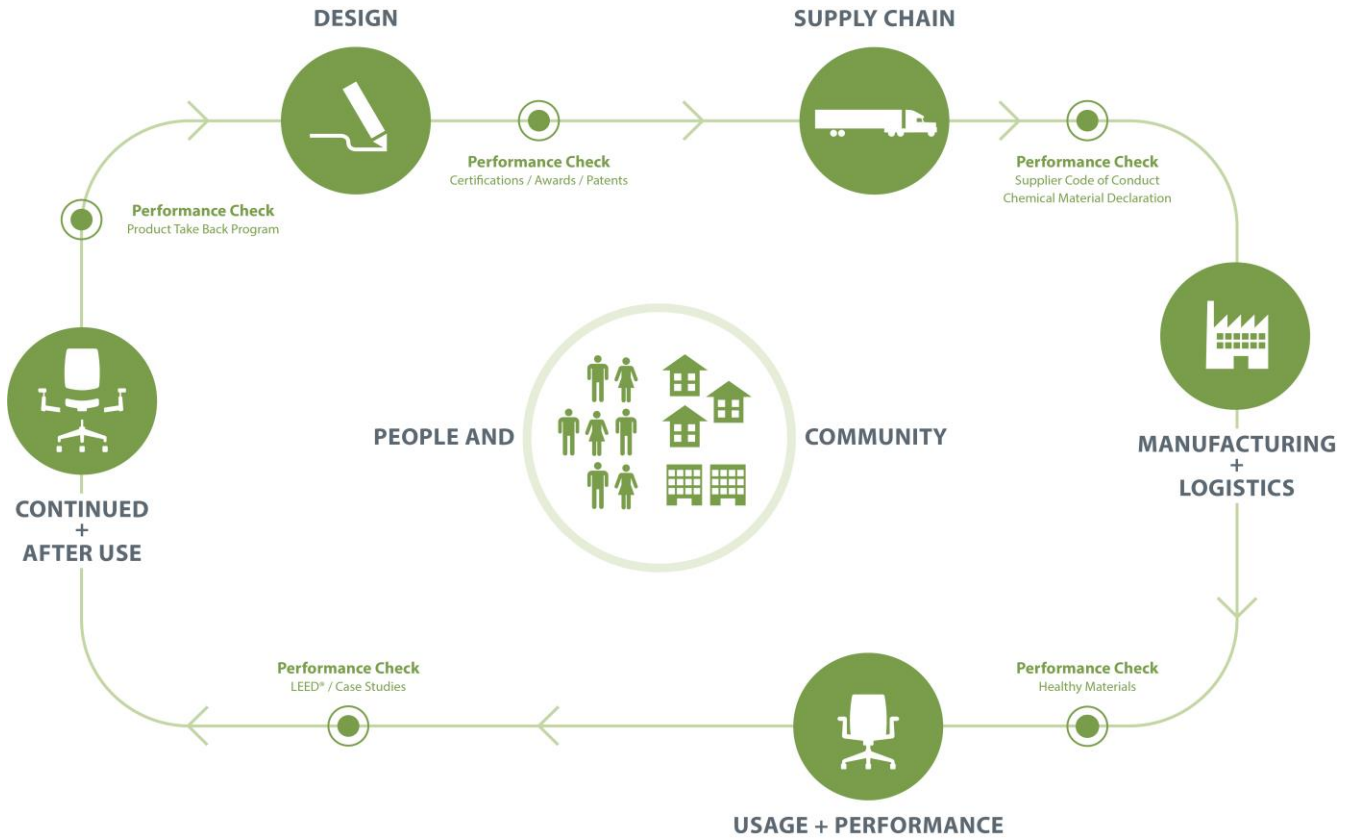




# Openest Chick Pouf®, <sup>TM</sup>

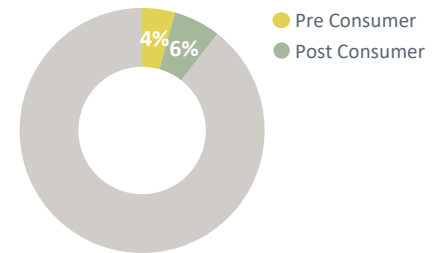
Category: Lounge



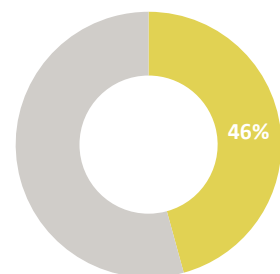
Bridging the unexpected and familiar, Openest lounge furnishings bring a distinctly new perspective to the work landscape. Inviting and approachable, the Openest Chick pouf envelops you in comfort, providing a cozy, eggshell-like nook, an ottoman, or a catch-all surface.

Openest Chick Pouf is manufactured in a zero landfill, ISO 9001 and ISO14001 certified facility in High Point, North Carolina and is transported in freight vehicles with optimized volume for efficient use of loading space. When a product reaches the end of its useful life, customers and partners are encouraged to avoid landfilling and instead pursue second life options.

### Recycled Content



### Recyclability



Material	Material Weight	
Plywood	16.93 lbs	(40%)
Steel	13.30 lbs	(31%)
Foam	4.54 lbs	(11%)
Plastic	4.14 lbs	(10%)
Fabric	1.91 lbs	(5%)
Other	1.49 lbs	(4%)
<b>Total</b>	<b>40.84 lbs</b>	<b>(97%)</b>

## Life Cycle Assessment (LCA)

Haworth is committed to better understanding and reducing the environmental impacts of our products and operations.

Life Cycle Assessments (LCAs) are tools which allow us to evaluate potential environmental impacts of our products from cradle-to-grave including raw material extraction, pre-processing, production, product distribution, use and maintenance, and end-of-life management.

Results of LCA studies provide value in the identification of cost savings, improvement of design and material evaluation, advancement of procurement and transportation decision making, new product development criteria, as well as ultimately reducing Haworth's impact on the environment through continuous improvement efforts.

## Material Chemistry

Haworth is committed to providing our customers with products that support safe and healthy environments. We are working diligently toward the ongoing reduction of hazardous chemicals associated with parts and materials we source, as new safer alternatives become commercially available.

These include, among others, PVC, benzidine dyes, hexavalent chromium, certain hazardous phthalates, PBDE flame retardants, and those chemicals known to contribute towards ozone depletion.

We are committed to achieving our goal of being transparent with our customers on our progress.

Healthier Hospitals Healthy Interiors Compliant

## Certifications



### Greenguard Certified

Certification # 85102-420

Refer to [spot.ul.com](http://spot.ul.com) for certificate



### Forest Stewardship Council® certified wood is through tailored solutions

Chain of Custody Code: SCS-COC-001218

## Building Standards

In support of building standards such as Leadership in Energy and Environmental Design, LEED® v4 and WELL Building Standard®v2:

Low Emitting:

- Most Haworth products comply with ANSI/BIFMA e3-2014e Credit 7.6.1 and 7.6.2.
- Demonstration via GREENGUARD certificates.

Responsible Sourcing of Raw Materials:

- Most Haworth wood products are available as FSC® Mix 70%.
- Most Haworth products are composed of high recycled content.

Environmental Product Declarations (EPDs):

- Product-specific Type III EPDs including external verification are available for certain high-volume products.