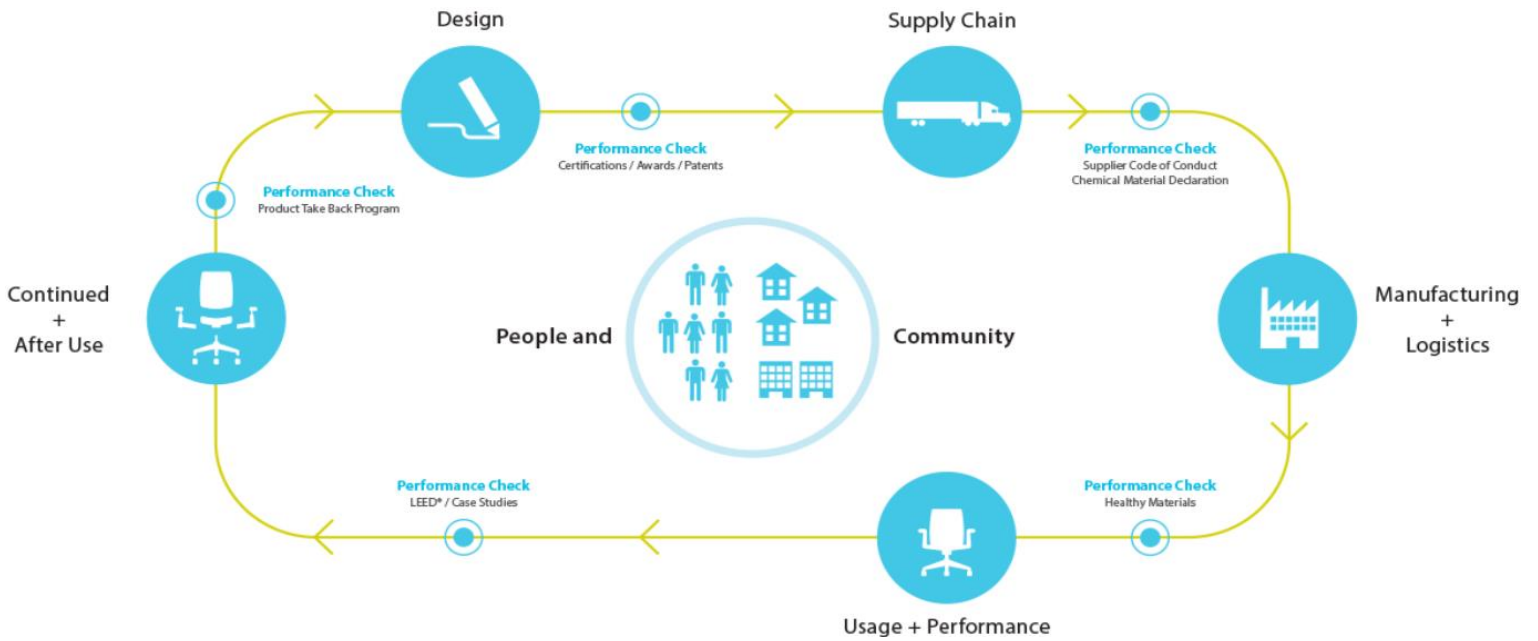


# JANUScafé

CATEGORY: Tables

PRODUCT ENVIRONMENTAL DATA SHEET

SECTOR: NORTH AMERICA



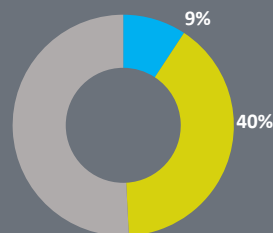
JANUScafé is manufactured in Guangzhou City, China.



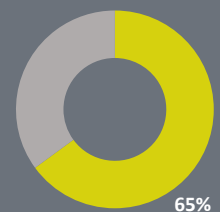
Cafes, dining areas, lounges, and casual meeting and touch-down areas—each social space serves a unique purpose, but they all require tables to support people and their activities. Designed to pair well with many seating options, the tables are available in three standard heights, allowing both variation and continuity across spaces.

Material	Material Weight
Steel	40.18 lbs (64%)
Laminate	21.39 lbs (34%)
Plastic	0.41 lbs (1%)
Other	0.52 lbs (1%)
<b>Total</b>	<b>62.50 lbs (100%)</b>

### Recycled Content



### Recyclability



■ Pre Consumer  
■ Post Consumer



### LIFE CYCLE ASSESSMENT (LCA)

Haworth is committed to better understanding and reducing the environmental impacts of our products and operations.

Life Cycle Assessments (LCAs) are tools which allow us to evaluate potential environmental impacts of our products from cradle-to-grave including raw material extraction, pre-processing, production, product distribution, use and maintenance, and end-of-life management.

Results of LCA studies provide value in the identification of cost savings, improvement of design and material evaluation, advancement of procurement and transportation decision making, new product development criteria, as well as ultimately reducing Haworth's impact on the environment through continuous improvement efforts.



### CERTIFICATIONS

We strive for solutions that are neutral to the environment, with positive impacts on human health. Our products are designed and built leveraging global knowledge and best practices. Many of our products have earned top certifications such as Greenguard® and BIFMA level™.



### MATERIAL CHEMISTRY

Haworth believes our products should be safe for humans and the environment. We are working diligently to identify and eliminate chemicals of high concern from materials we source, as new safer alternatives become technically and commercially available.

These include, among others, PVC, benzidine dyes, ozone depleters, hexavalent chromium, certain hazardous phthalates, and PBDE flame retardants. We are committed to achieving this goal and being transparent with our customers about our progress.



### BUILDING STANDARDS

In support of building standards such as Leadership in Energy and Environmental Design, LEED® v4 and WELL Building Standard®v2:

Low Emitting:

- Most Haworth products comply with ANSI/BIFMA e3-2014e Credit 7.6.1 and 7.6.2.
- Demonstration via GREENGUARD certificates.

Responsible Sourcing of Raw Materials:

- Most Haworth wood products are available as FSC® Mix 70%.
- Most Haworth products are composed of high recycled content.