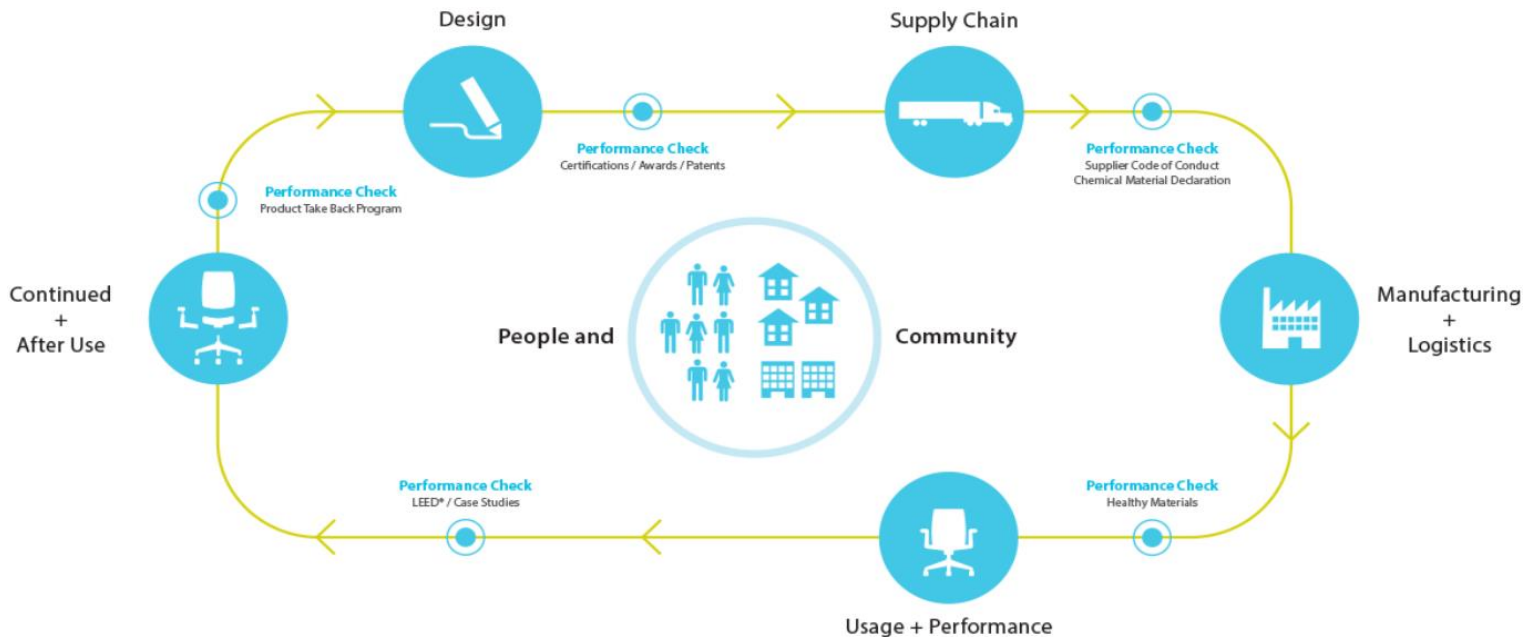


Tate

CATEGORY: SEATING



PRODUCT ENVIRONMENTAL DATA SHEET
SECTOR: NORTH AMERICA

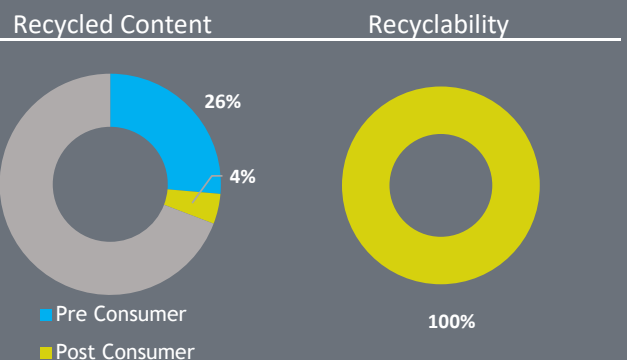


Tate is manufactured in Syracuse, Indiana, USA.



The high quality of Tate’s materials and construction makes it ideal for large-scale environments, from universities and hospitals to libraries and corporate campuses. Whatever the footprint and use of the space, Tate offers the flexibility to make it useful and inviting. A comprehensive palette of frame and slat finishes, along with a range of table sizes, shapes, and heights, make Tate a versatile and classic collection of products.

Material	Material Weight
Plastic	9.55 lbs (56%)
Aluminum	7.50 lbs (44%)
Total	17.05 lbs (100%)





LIFE CYCLE ASSESSMENT (LCA)

Haworth is committed to better understanding and reducing the environmental impacts of our products and operations.

Life Cycle Assessments (LCAs) are tools which allow us to evaluate potential environmental impacts of our products from cradle-to-grave including raw material extraction, pre-processing, production, product distribution, use and maintenance, and end-of-life management.

Results of LCA studies provide value in the identification of cost savings, improvement of design and material evaluation, advancement of procurement and transportation decision making, new product development criteria, as well as ultimately reducing Haworth's impact on the environment through continuous improvement efforts.



CERTIFICATIONS

We strive for solutions that are neutral to the environment, with positive impacts on human health. Our products are designed and built leveraging global knowledge and best practices. Many of our products have earned top certifications such as Greenguard® and BIFMA level™.



MATERIAL CHEMISTRY

Haworth believes our products should be safe for humans and the environment. We are working diligently to identify and eliminate chemicals of high concern from materials we source, as new safer alternatives become technically and commercially available.

These include, among others, PVC, benzidine dyes, ozone depletors, hexavalent chromium, certain hazardous phthalates, and PBDE flame retardants. We are committed to achieving this goal and being transparent with our customers about our progress.



BUILDING STANDARDS

In support of building standards such as Leadership in Energy and Environmental Design, LEED® v4 and WELL Building Standard®v2:

Low Emitting:

- Most Haworth products comply with ANSI/BIFMA e3-2014e Credit 7.6.1 and 7.6.2.
- Demonstration via GREENGUARD certificates.

Responsible Sourcing of Raw Materials:

- Most Haworth wood products are available as FSC® Mix 70%.
- Most Haworth products are composed of high recycled content.