

Openest[®]

COLLECTION BY PATRICIA URQUIOLA



Chick™ Poufs



Small Square
With Back



Small Square
Without Back



Large Square



Rectangle



Large Round

Feather™ Sofas



Symmetrical



Symmetrical with Table

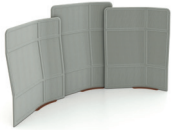


Asymmetrical

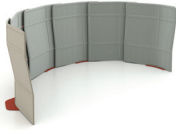


Asymmetrical with Table

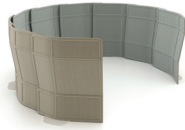
Plume™ Screens



Plume 3



Plume 6



Plume 9

Desks



Single Desk



Double Desk



Double Desk with
Monitor Mount



Privacy Desk Left



Privacy Desk Right

Booths



Single Booth



Double Booth



Double Booth with
Height-Adjustable Table



Privacy Booth Left



Privacy Booth Right



Corner Booth Left



Corner Booth Right



Conference Booth



Conference Booth with
Monitor Mount

Sprig Tables



Rectangle

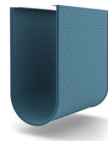


Large Round



Small Round

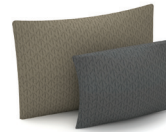
Accessories



Soft Storage



Coat Hook



Square or
Rectangle Pillow



Hideaway Power



Bezel Power Module



Bezel USB Module



Height-Adjustable Table

Openest Collection

How will you use the curved forms, soft textiles, and cozy enclosures of Openest? We've collected a few of our favorite ideas and hope this design guide will inspire more of your own.

Designed by Patricia Urquiola, Openest was shaped around the ways people work. Its soft, organic, and inviting forms add a fresh array of options to the designer's toolbox, inspiring new approaches to divide space and help people connect.

Explore Openest more at haworth.com/openest-designer-guide. For finish selections, visit our Surface Collection website at surface.haworth.com and search Openest.

For ideas on designing for well-being, read our white paper, [The Workspace Nudge™ for Well-Being](#).

Reception Spaces

Open spaces that foster connection with guests and provide a quiet space to prepare before meetings.

Tips and Tricks

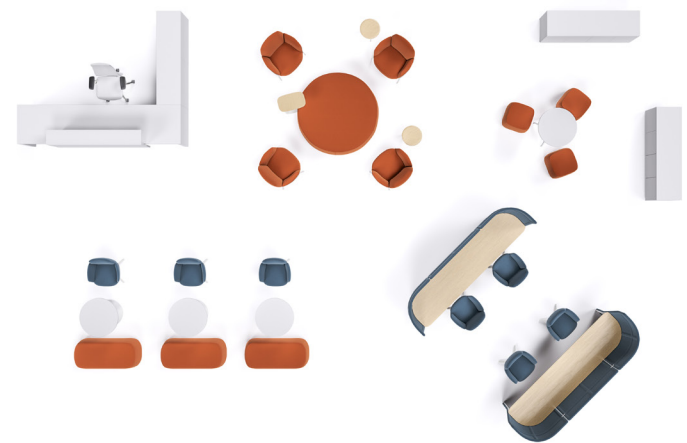
Consider using a Chick pouf in place of an occasional table.

Placing Chick poufs along circulation routes or in prominent locations can nudge workers to take a break, interact with colleagues, and take a moment to recharge.

A row of no-back, small square Chick poufs can provide flexible, overflow seating.

Use an Openest booth or desk as a retreat to provide private waiting spaces near executive offices or in open reception spaces.

With their organic lines and soft curves, Feather sofas used in reception areas make environments seem inviting and less sterile, so people feel at home as they wait; add hideaway power underneath to offer more convenience and connection.







Collaborative Spaces

Where people come together for group conversations, formal meetings, breakout sessions, and casual chats.

Tips and Tricks

Be mindful of whether individual spaces face toward or away from each other and adjacent benching areas.

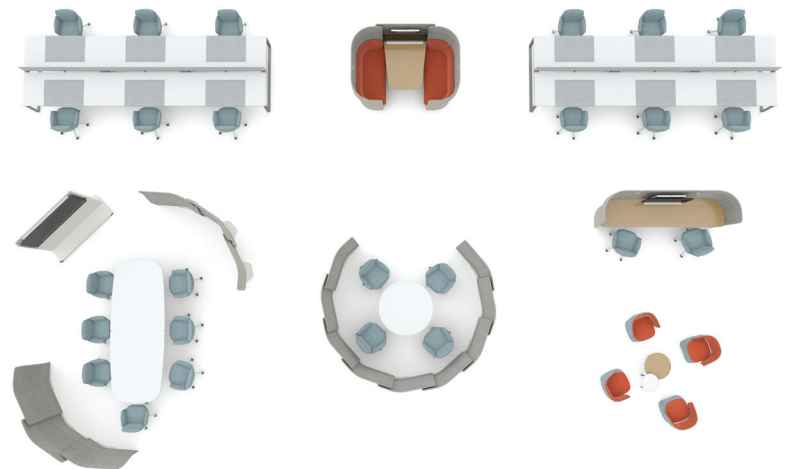
Consider multiple sets of Plume 3 screens for flexibility and configurability.

Use Plume screens to break up open spaces into smaller group work areas.

Be mindful of activities in spaces next to screens to help people on both sides maintain focus.

Offer choices to workers with a mix of individual nooks, casual spaces, and assigned benching areas.

Repeat a row of booths or desks to enclose the front and back of spaces.



Informal Brainstorming Spaces

Spaces where small groups gather for quick, short-term collaboration.

Tips and Tricks

Pair Chick poufs with Workware® wireless technology for cordless collaboration, enabling teams to share ideas.

Use different colors and/or textures on the tops and sides of Chick poufs for visual interest.

Add groupings of Chick poufs adjacent to workstations to create flexible meeting spaces away from desks and nudge people to take short, healthy walks.

Use Plume screens to create a temporary enclosure for added privacy within a larger space.

Incorporate Pip tables to accommodate work tools and personal items, keeping them close at hand.

Use a group of Chick poufs to draw people together and foster connectedness.







Think Spaces

Private spaces that provide a retreat for thinking, research, focus, and strategic conversations.

Tips and Tricks

Use Openest components to add interest with functional and inviting spaces.

Combine lounge pieces with Workware technology solutions to lend a casual feeling to group workspaces.

Use Chick poufs to create inviting spaces where people can work in various postures.

Take advantage of the integrated Hideaway Power to support mobile technology.

Consider five feet of space between each booth or desk to maintain visual geometry and allow easy circulation.

Leave breathing room between Plume screen sets to enhance the landscape.



Touchdown Spaces

Unassigned spaces for mobile workers, visitors, and quick or casual collaborations.

Tips and Tricks

Plan screen placement strategically, leveraging existing walls to help enclose spaces or create sitting areas on both sides of a single screen.

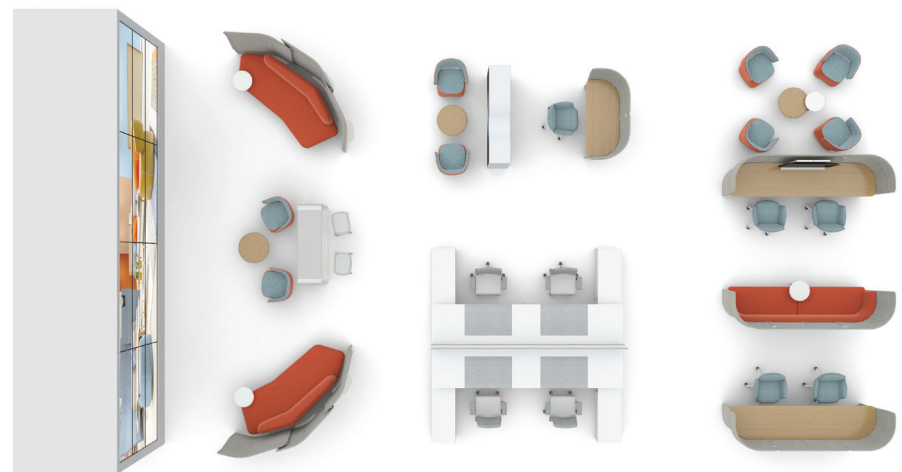
When placing screens, consider whether you want to allow or block sunlight.

Use a set of Plume 9 screens with a table to enclose a small group area.

Keep acoustics in mind when incorporating screens as they can provide some acoustical privacy.

Add a Conference Booth with Workware™ technology to support impromptu meetings and collaboration.

Plan five feet of space between booths and desks to maintain visual geometry and allow easy circulation.







Social Spaces

Casual areas where people come together for social conversations and refreshments.

Tips and Tricks

Use screens or booths to form cozy settings for casual collaboration.

Combine two Double Booths with two round tables to create a restaurant-style environment.

Mix Openest lounge pieces with existing architecture elements to divide areas.

Mix and match a variety of Chick pouf shapes and sizes to allow people to rearrange the space depending on preferences and the task at hand.

Blend Chick poufs with sofas and screens to create relaxed settings for conversations.

Place two or three Chick poufs around a table for quick drop-in meetings.

