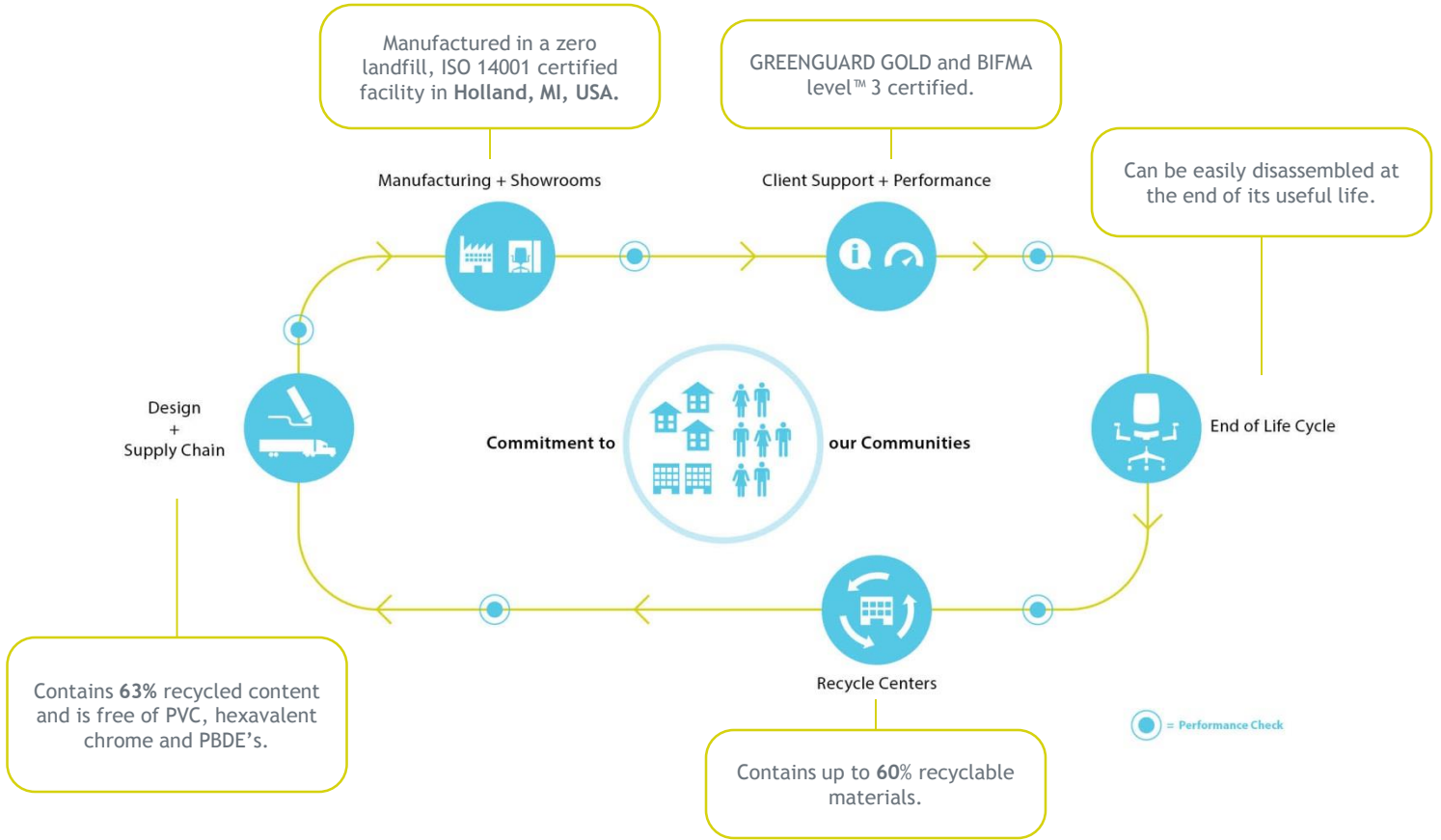


Compose®

PRODUCT CATEGORY: SYSTEMS

PRODUCT ENVIRONMENTAL DATA SHEET

SECTOR: NORTH AMERICA



HAWORTH®

The recycled content calculation for Compose is based on a BIFMA typical configuration.

RECYCLED CONTENT

	Material Weight	Post-Consumer Recycled Content	Pre-Consumer Recycled Content
Steel	321.18 lbs (56%)	109.31 lbs	97.14 lbs
Particleboard	168.32 lbs (30%)	42.92 lbs	100.15 lbs
Aluminum	17.07 lbs (3%)	1.71 lbs	10.24 lbs
Plastic	10.24 lbs (2%)	0.00 lbs	0.00 lbs
Other	53.96 lbs (9%)	2.10 lbs	0.00 lbs
Total	570.77 lbs (100%)	156.04 lbs (27%)	207.53 lbs (36%)

PRODUCT CERTIFICATIONS



Level 3 certified
Certification # C0054326-122



GREENGUARD GOLD certified
Certification # 2645-420



Forest Stewardship Council® (FSC®)
certified wood materials available as
standard product offering.
Chain of Custody: SCS-COC-001218

MATERIAL CHEMISTRY*

Compose Contains:

- Polyvinyl Chloride (PVC)
- Brominated or halogenated flame retardants
- Persistent organic pollutants
- Heavy metals (hexavalent chrome, lead, cadmium, mercury)
- Chlorofluorocarbons (CFCs)
- Phthalates
- None of the above
- Haworth Banned Chemicals List compliant
- Living Building Challenge™ Red List compliant¹

*chemicals disclosed to concentrations ≥ 100ppm of materials.

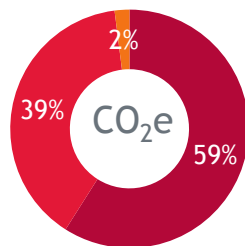
¹ Compliant when Green Core option is specified.

LIFE CYCLE ASSESMENT (LCA) SUMMARY*

Global Warming Potential	1050 kg CO ₂ eq.
Acidification Potential	5.69 kg SO ₂ eq.
Eutrophication Potential	.94 kg N eq.
Smog	121 kg O ₃ eq.

Impact by life cycle stage

- Materials & Manufacturing
- Transportation
- End of Life



*Impact assessment method: TRACI 2.1 v1.00 / US-Canadian 2008

RECYCLABILITY & END OF LIFE MANAGEMENT

	Material Weight	Recyclable Content
Steel	321.18 lbs (56%)	320.53 lbs
Particleboard	168.32 lbs (30%)	0.00 lbs
Aluminum	17.07 lbs (3%)	17.07 lbs
Plastic	10.24 lbs (2%)	1.73 lbs
Other	53.96 lbs (9%)	0.00 lbs
Total	570.77 lbs (100%)	340.88 lbs (60%)

Once a Haworth product reaches the end of its life, our product's end-of-life program ensures that customers have options (e.g., recycling, resale, refurbishment, and donation) to prevent it from being discarded into a landfill. To encourage recycling, we have published disassembly instructions for many of our products on the individual product pages. Our products have been intentionally built using highly-recyclable metals and plastics including steel, aluminum, polypropylene, and nylon.

We encourage our customers to contact us regarding end-of-life options in their region so that we can help them make the world a better place for future generations.

The polyethylene film and corrugated cardboard packaging materials used on Compose are both readily recyclable.



LEADERSHIP IN ENERGY AND ENVIRONMENTAL DESIGN (LEED®) v2009

Interior Design and Construction (ID+C)

MRC4: Recycled Content	Compose contains 27% post-consumer and 36% pre-consumer recycled content.	1-2 points
MRC5: Regional Materials	Compose is manufactured in Holland, MI, USA.	1-2 points
MRC7: Certified Wood	FSC certified wood is available as standard product with some finish restrictions.	1 point
IEQc4.5: Low-emitting materials - Systems Furniture and Seating	Compose is GREENGUARD GOLD certified as low-emitting.	1 point

Building Design and Construction (BD+C)

MRC4: Recycled Content	Compose contains 27% post-consumer and 36% pre-consumer recycled content.	1-2 points
MRC5: Regional Materials	Compose is manufactured in Holland, MI, USA.	1-2 points
MRC7: Certified Wood	FSC certified wood available as standard product with some finish restrictions	1 point

Existing Buildings: Operations and Maintenance (EB:OM)

MRC2: Sustainable Purchasing - Durable Goods	Compose contains 27% post-consumer and 36% pre-consumer recycled content.	1-2 points
--	---	------------

Building Design and Construction (BD+C): Healthcare

MRC5: Furniture and medical furnishings	Compose and adaptable components comply with Option 1. Compose has been evaluated down to 100ppm and does not contain hexavalent chrome, heavy metals, PFCs or PFOA, or added anti-microbial treatments. Compose is also Greenguard Gold certified.	1-2 points
---	---	------------

To learn more about Haworth sustainability initiatives [click here](#).

Product Support

Visit www.haworth.com to find the Haworth dealer closest to you.

Environmental support

Contact sustainability@haworth.com

LEADERSHIP IN ENERGY AND ENVIRONMENTAL DESIGN (LEED®) v4

LEED ID+C: Commercial Interiors | v4

MR109: Interiors life-cycle impact reduction	Depending on products chosen, Haworth products can contribute to some of the design for flexibility strategies including; take back system, recyclable materials, flexible power distribution, moveable walls, or access flooring.	1-4 points
MR114: Building product disclosure & optimization- sourcing of raw materials	Haworth is a member of the UN Global Compact and published an annual Communication of Progress which contributes to Option 1: raw material source and extraction reporting. Haworth products also contain recycled content or FSC certified wood which contribute to Option 2: leadership extraction practices.	1-2 points
IEQ112: Low-emitting Materials	Haworth products is Greenguard certified which is compliant with ANSI/BIFMA Standard Method M7.1-2011.	1-3 points

LEED BD+C: New Construction | v4

MR114: Building product disclosure & optimization- sourcing of raw materials	Haworth is a member of the UN Global Compact and published an annual Communication of Progress which contributes to Option 1: raw material source and extraction reporting. Haworth products also contain recycled content or FSC certified wood which contribute to Option 2: leadership extraction practices.	1-2 points
IEQ112: Low-emitting Materials	Haworth products is Greenguard certified which is compliant with ANSI/BIFMA Standard Method M7.1-2011.	1-3 points

To learn more about Haworth sustainability initiatives [click here](#).

Product Support

Visit www.haworth.com to find the Haworth dealer closest to you.

Environmental support

Contact sustainability@haworth.com

HAWORTH®