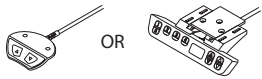
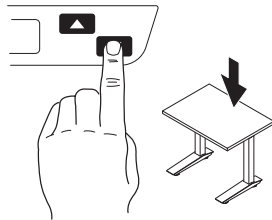


# Calibration and Settings for the Planes Height-Adjustable Tables



## FOR ELECTRIC TABLES



### Initial Calibration

After assembly *all* electric tables must be calibrated to insure smooth and trouble free movement.

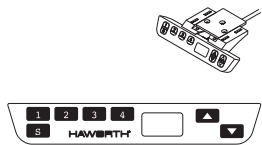
1. Lower the table to the lowest height by pressing the down arrow on the switch.
2. Continue to press the down arrow for 5 to 10 seconds.

NOTE: The table will readjust itself if needed.

### Follow-up calibration

1. Inform the user that the table should be recalibrated once every month by following the instructions above.
2. The table should also be recalibrated if jerky or uneven movement is noted.

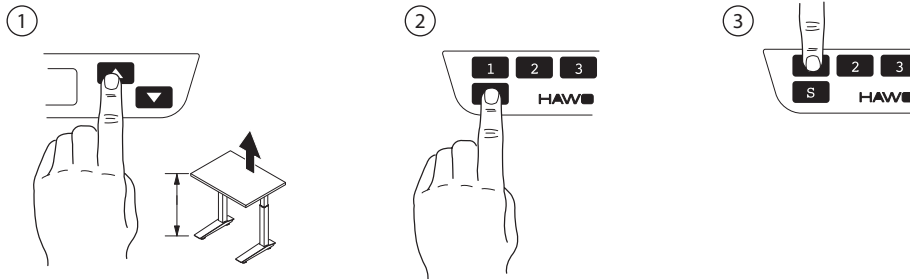
## PRESET SWITCH INSTRUCTIONS



### Saving a height position with the preset switch

1. Position the top to the desired height
2. Press the S button
3. Within 5 seconds press the desired number key (1-4) until a double click is heard.

NOTE: The readout will show for example S (number) until the double click is heard and then the height readout will return.



### Moving to a preset height

1. Press the appropriate number button.
2. Continue to press the button until the saved position is reached.

### Changing from inches to centimeters

The table ships set to read in inch increments but can be changed on site to read in centimeters.

1. Press the 1, 2 and up arrow buttons simultaneously
2. Use the up and down arrow keys until the readout shows S 5
3. Press the S button to complete
4. Use the same procedure to switch back to inches.



With your internet-enabled camera phone, visit [get.neoreader.com](http://get.neoreader.com) and download the 2D scanning application to use this barcode.